



Nursery Road | Rugeley | WS15 1EZ

£170,000

 **Webbs**  
estate agents



## Summary

**\*\* NO UPWARD CHAIN \*\* IN NEED OF MODERNISATION \*\* POPULAR LOCATION \*\* CLOSE TO AMENITIES \*\* THREE BEDROOMS \*\* LOUNGE \*\* LARGE KITCHEN DINING ROOM \*\* GOOD SIZE DRIVEWAY \*\* IDEAL FOR FIRST TIME BUYERS \*\* SMALL COURTYARD TO REAR \*\***

WEBBS ESTATE AGENTS are pleased to market this three bedroom semi detached property, in need of modernisation, situated in a popular area of Brereton on Nursery Road. Viewing of the property is advised to appreciate the size and space on offer. The property is located close to amenities, useful transport links, schools and much more! The internal accommodation briefly comprises; Entrance hallway, lounge, kitchen dining room, three bedrooms and a family bathroom. Small rear court yard and parking to front driveway only. The property would be ideally suited to a first time buyer looking to get their foot on the property market. Viewing of the property is advised to appreciate the size, space and potential on offer. Potential purchasers should be aware of the separate bungalow to the rear, this is not included within the sale.

## Key Features

- NO UPWARD CHAIN
- POPULAR LOCATION
- LOUNGE
- GOOD SIZE DRIVE
- IDEAL FOR FIRST TIME BUYERS
- IN NEED OF MODERNISATION
- THREE BEDROOMS
- KITCHEN DINING ROOM
- CLOSE TO AMENITIES
- VIEWING ADVISED

## Rooms and Dimensions

### Hallway

### Living Room

12'9 x 10'4 (3.89m x 3.15m)

### Kitchen

19'4 x 11'8 (5.89m x 3.56m)

### Landing

### Bedroom 1

12'1 x 9'10 (3.68m x 3.00m)

### Bedroom 2

11'5 x 11'6 (3.48m x 3.51m)

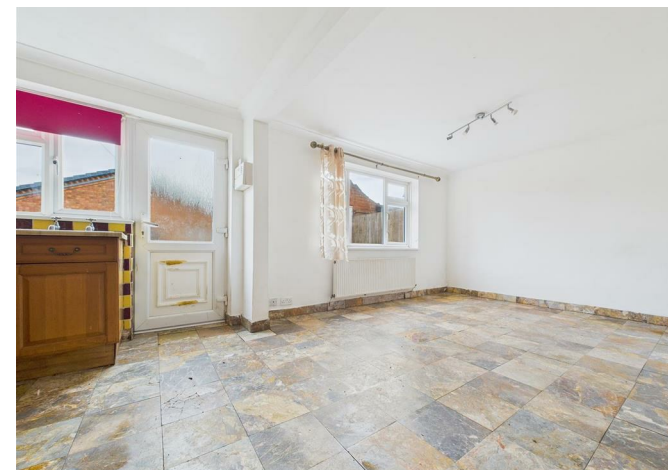
### Bedroom 3

7'7 x 7'6 (2.31m x 2.29m)

### Bathroom

7'7 x 5'6 (2.31m x 1.68m)

### IDENTIFICATION CHECKS - C









Webbs Estate Agents - endeavour to maintain accurate depictions of properties in Virtual Tours, Floor Plans and descriptions, however, these are intended only as a guide and purchasers must satisfy themselves by personal inspection.

